



Stick and Poke (Detail), 2024. Acrylic on canvas. 48 x 36 inches. © Alic Brock. Courtesy of Allouche Gallery & Alic Brock.

BEYOND PORTRAITURE

A GROUP EXHIBITION PRESENTED BY ALLOUCHE GALLERY

April 18 - May 13, 2024 | New York, NY

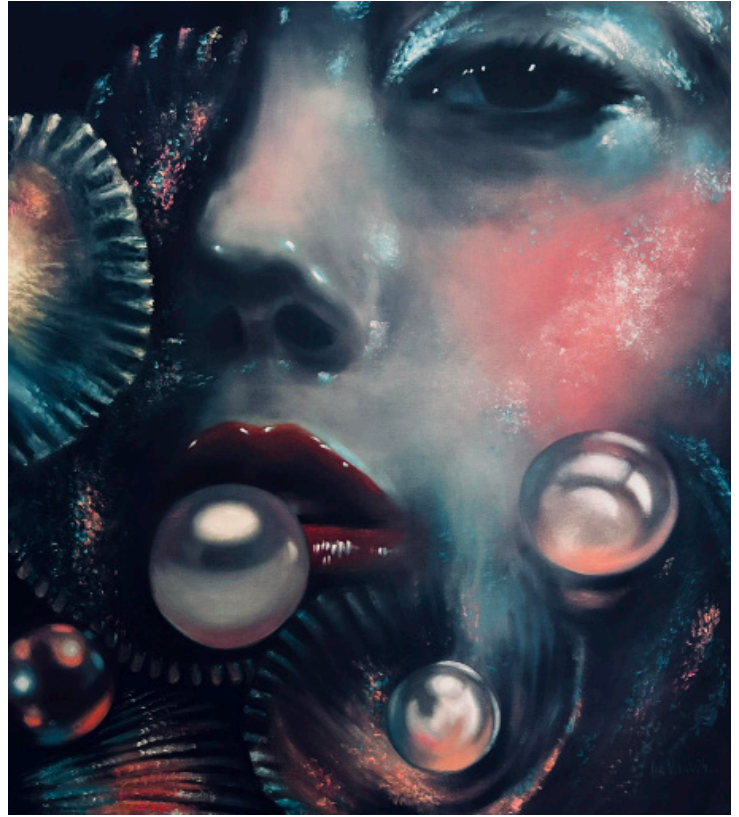
April 30 - June 8, 2024 | Los Angeles, LA

Allouche Gallery is thrilled to announce *Beyond Portraiture*, a dynamic group exhibition featuring 10 contemporary artists from around the globe, premiering on Thursday, April 18th in NYC and Tuesday April 30th in Los Angeles with an opening reception in both locations from 6-9pm. *Beyond Portraiture* brings together a rich tapestry of diverse perspectives from Dubai to Slovenia, pushing the boundaries of the contemporary art scene.

ALLOUCHE GALLERY



Get a Grip, 2024. 40 x 24 inches. © Roxy Peroxide. Courtesy of Allouche Gallery & Roxy Peroxide



Birth of the Pearl 3, 2024. Oil on canvas. 57.7 x 65 inches. © Iva Visosevic. Courtesy of Allouche Gallery & Iva Visosevic.

Roxy Peroxyde (Roxanne Sauriol Hauenherm), a self-taught painter hailing from Montreal, Canada, showcases her vivid contemporary interpretations of classic paintings in a hyper-realistic manner. Peroxyde's work elevates hyper contemporary female figures into the canon of the classics; the women she depicts can be found crying while texting, or dawning fluffy pink skirts amid a backdrop of clouds at dawn. Similarly, Riikka Sormunen, based in Helsinki, transports viewers into a world of soft otherworldly femininity; it is a romanticism and sensuality reminiscent of Klimt. In Sormunen's world, white pigeons wear regal hennins, and leisurely women rest their heads on chaise lounges, golden hair flowing.

Iva Visosevic from Croatia similarly explores themes of divine femininity. Her large scale canvases are ethereal in nature, featuring women among pearls and nacles. Her landscape is ethereal, her color palette a mix of rich blues, deep pinks and shimmery purples, highlighting or obscuring the soft contours of the female figure.

ALLOUCHE GALLERY



The Apple of My Eye, 2024. Oil and acrylic on linen. 35.4 x 27.6 inches. © Ms. DYU. Courtesy of Allouche Gallery & Ms. DYU



Fruit Cocktail_Broccoli, 2024. 63 x 51 inches. © Miju Lee. Courtesy of Allouche Gallery & Miju Lee.

In a stylistic departure from realism, Anaja Gaia from Slovenia presents anonymous, faceless feminine figures in serene, natural landscapes, creating contemplative and longing atmospheres. Her brush strokes are flat and smooth, her colors are soft and oceanic. Similarly pensive in nature, Miju Lee from South Korea explores storytelling through figures with far away glances, usually female, often with ordinary objects in incongruous places. Her work is playful and her composition precise, Lee somehow simultaneously captures the mundane and the fantastical.

ALLOUCHE GALLERY



Luggage, 2024. Oil and acrylic on linen. 35.4 x 27.6 inches. © Ms. DYU. Courtesy of Allouche Gallery & Ms. DYU.



Sailor's Dress, 2024. Oil on canvas. 57.2 x 38.2 inches. © Norizo. Courtesy of Allouche Gallery & Norizo

Norizo from Japan likewise captures young women with longing expressions, often solitary, in different scenes: one can be found riding a motorcycle, another is sewing. Although his portraits evoke the essence of nostalgia, his style is playful, illustrative and anime-like. Ms. Dyu, based in Dubai, also portrays solitary figures with powerful gazes; she introduces an element of absurdity and irony through more explicitly cartoonish compositions. Her figures' faces are shielded by their hair, which in turn, is obscured by the clouds in the background. Her work is delightfully tongue-in-cheek; in her universe, lap dogs have expressive brows and give side eye.

ALLOUCHE GALLERY



Stick and Poke, 2024. Acrylic on canvas. 48 x 36 inches. © Alic Brock. Courtesy of Allouche Gallery & Alic Brock.



The Ghost In Me, 2024. Oil on canvas. 47.2 x 33.5 inches. © Teiji Hayama. Courtesy of Allouche Gallery & Teiji Hayama.

Teiji Hayama's work similarly contains a sardonic humor to it, as he explores the intersection of technology and portraiture, distorting pop icons like Elvis Presley, Marilyn Monroe and Twiggy in uncanny ways. Through the overproduction of layered icons, Hayama questions the societal limitations imposed by technology on meaningful connections. In similar fashion, Alic Brock, based in Atlanta, employs an ultra-precise airbrush technique, distorting and cropping (or "chopping and screwing") popular digital images before rendering them on canvas. His hyper-saturated color palette and repetition serve as a meditation on digital communication and visual transmission.

ALLOUCHE GALLERY

About Allouche Gallery:

Established in 2014, Allouche Gallery is home to an international roster of some of the world's most recognized and culturally significant contemporary visual artists. Through its highly curated exhibition program, the gallery has garnered a reputation for highlighting artists whose work directly challenges preconceived notions of contemporary visual culture and affirming their place in 21st Century art. Home to a select group of both established and rising artists across a variety of disciplines, Allouche Gallery represents the work of Felix R. Cid, Ron English, Nick Georgiou, Paul Insect, Michael Reeder, Malik Roberts, Swoon, Hannah Yata, Juan de la Rica and more. Founded by Eric Allouche, Allouche Gallery is one of New York's premiere commercial art galleries and the preeminent exhibitor of contemporary art. For more information about the upcoming show at Allouche Gallery, please visit

www.allouchegallery.com